

The logo for 'anowah' is displayed in a white, rounded rectangular shape. The text 'anowah' is written in a lowercase, sans-serif font. The 'a' is blue, 'n' is orange, 'o' is blue with a white target symbol in the center, 'w' is orange, and 'ah' is blue. The background of the entire page is a photograph of two people, a woman and a man, wearing large straw hats and working in a garden. The woman on the left is wearing a black dress with white polka dots and is holding a yellow fruit. The man on the right is wearing a black and white striped shirt and is holding a white bucket filled with green leafy vegetables. The background shows a grassy area, trees, and a blue sky with light clouds. The bottom right corner of the page features a decorative graphic with orange and blue curved shapes.

anowah

Home and  
Living Options

Anowah, founded in 1967 is a not-for-profit NDIS registered disability support provider based in South West Sydney.

### **What makes Anowah different?**

- We create 'forever homes' with family connection and security for clients.
- A commitment to continuity, dignity and choice for people with disability.
- Holistic and respectful support.
- Rural-style settings with low-stimulus environments that promote wellbeing and comfort.

Our purpose is driven by, 'empowering adults with disability to live with dignity, choice and belonging – every day, for life.

*Supporting independence, choice, and meaningful everyday living.*

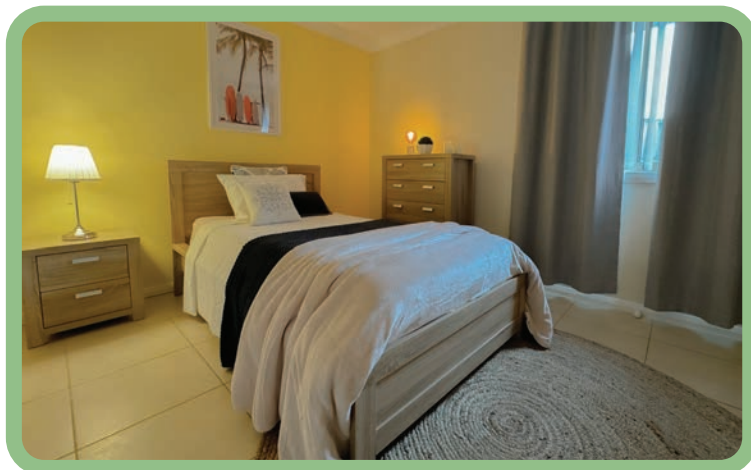
At Anowah, we provide safe, supportive and inclusive homes where people with disability can live with independence, dignity, and choice. Our approach is person-centred and guided by each person's goals, preferences and ways of living.

### **Our Homes**

Anowah homes are warm, inclusive and designed to support comfort, safety and independence.

#### **Features may include:**

- Accessible environments
- Private bedrooms
- Shared communal living spaces
- Friendly, trained staff on site
- Welcoming, home-like environments



## Home and Living Services

### Supported Independent Living (SIL)

SIL provides individualised supports for people who need assistance with daily tasks in a supported home.

We focus on building independence, maintaining safety, and creating a positive, comfortable home environment.

*Supports can include:*

- Personal care
- Building daily living and independent skills
- Cooking, cleaning and household tasks
- Accessing the community
- Medication management
- Overnight support options



### Individualised Living Options (ILO)

ILO provides flexible and tailored living arrangements that reflect each person's lifestyle, choices and long-term goals.

We work alongside you to design a living setup that feels right for you.

*Options can include:*

- Support by trained staff
- Co-residency with shared supports
- Flexible living arrangement designs
- Drop-in support for people living independently



### Short-Term Respite (STR)

Our Short-Term Respite offers a safe, supportive and welcoming place to stay when you need short-term support.

*Options can include:*

- Support by trained staff
- Opportunities to build confidence and independence
- Fun, Support by trained staff engaging activities
- A comfortable home-style environment
- Daily living assistance



## Who We Support

Adults with disability who want to:

- Build independence
- Access the right level of support
- Live in a safe, comfortable home
- Participate in social and community life



## Why Choose Anowah?

### Person-centred Support

You choose how you live.  
We support your routines,  
interests and goals.

### Respectful & Inclusive

We promote cultural  
safety, diversity and  
belonging for all people.

### Experienced, compassionate staff

Our team provides safe, respectful and  
skilled support, tailored to your needs.

### Flexible & Reliable

We work with you to build a support  
model that meets your needs now  
and into the future.

## Other Services



**Hub - Centre and Community Programs**



**Support Coordination**







# anowah

## Contact Us

We would love to hear from you to discuss how we can support you in your NDIS journey.

157-167 Koala Way, Horsley Park, NSW 2175

**P** 02 9620 1489

**E** [enquiry@anowah.org.au](mailto:enquiry@anowah.org.au)

**www.anowah.org.au**



@anowahcommunityliving

ACN 642 699 803 | ABN 23 922 372 767

Provider Number: 405 000 3373

